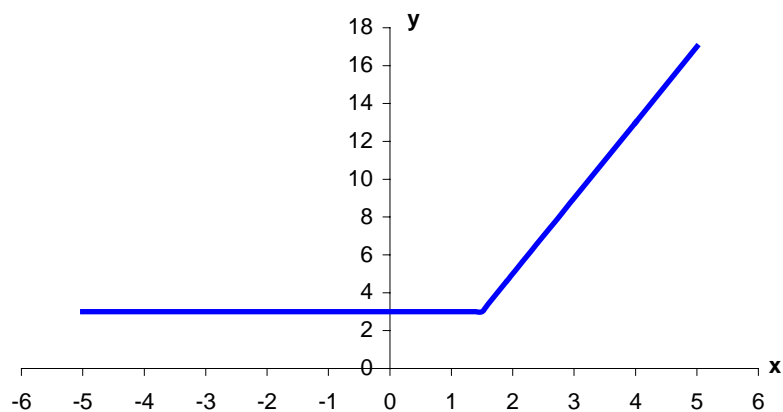
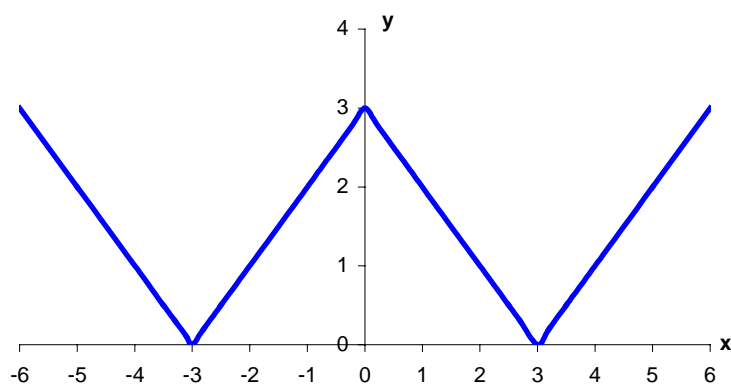


## 1.1 Reálná funkce jedné reálné proměnné

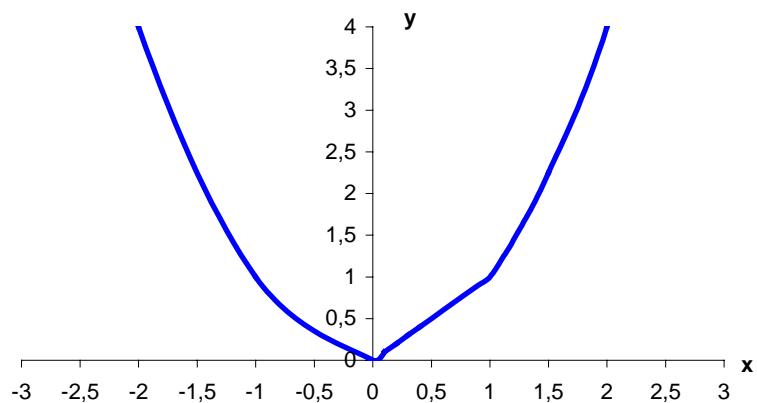
1.1.30 Sestrojte graf funkce:  $y = |2x - 3| + 2x$



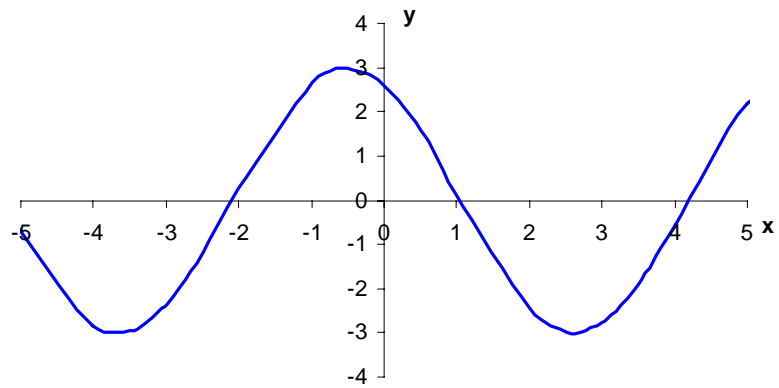
1.1.31 Sestrojte graf funkce:  $y = ||x| - 3|$



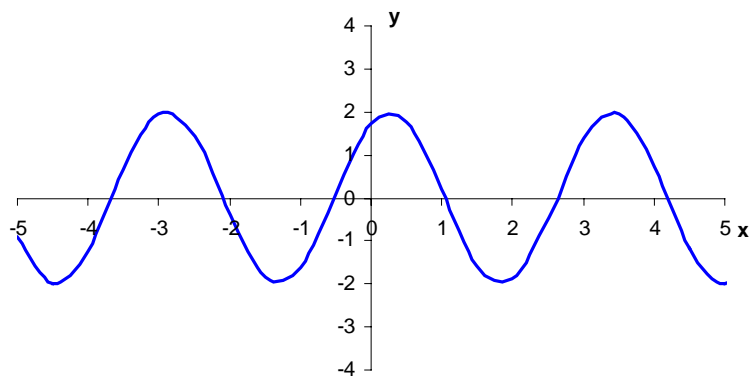
1.1.32 Sestrojte graf funkce:  $y = \max\{x, x^2\}$



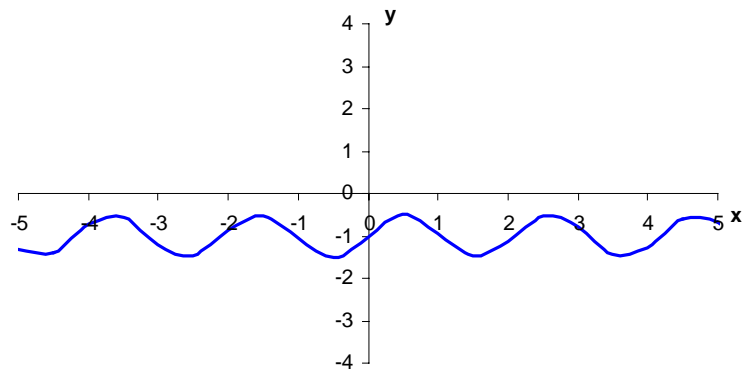
1.1.33 Sestrojte graf funkce:  $y = 3 \sin\left(t - \frac{4}{3}\pi\right)$



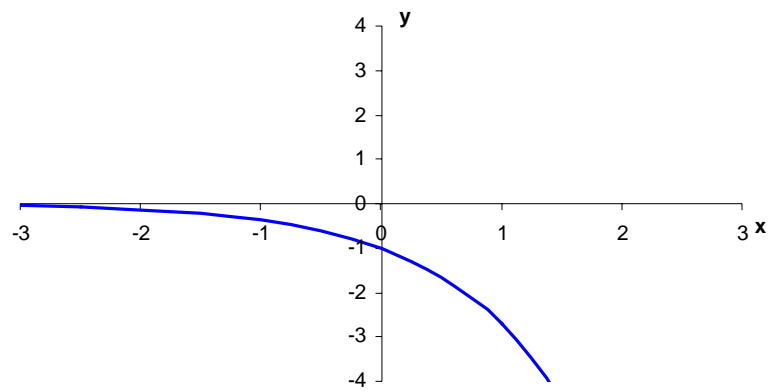
1.1.34 Sestrojte graf funkce:  $y = -2 \sin 2\left(t + \frac{2}{3}\pi\right)$



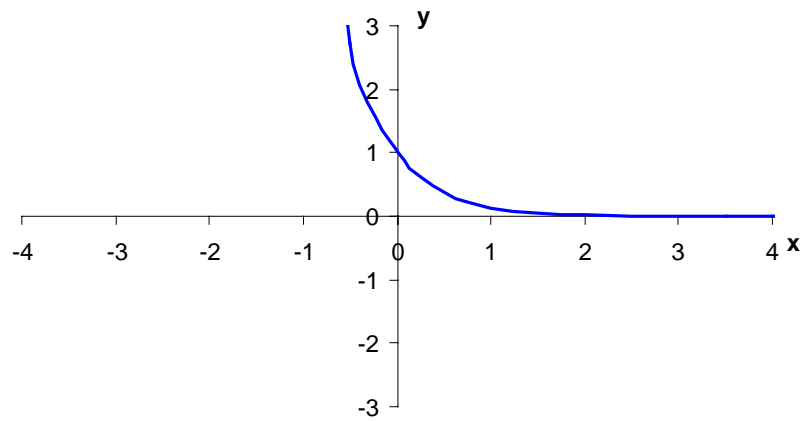
1.1.35 Sestrojte graf funkce:  $y = \frac{1}{2} \cos\left(3t - \frac{\pi}{2}\right) - 1$



1.1.36 Sestrojte graf funkce:  $y = -e^t$



1.1.37 Sestrojte graf funkce:  $y = e^{-2t}$



1.1.38 Sestrojte graf funkce:  $y = 2e^{t-5} + 3$

